



Series S302

Numeric large size displays
with PROFINET IO RT interface

Operating instructions

1 Contact

www.siebert-group.com

GERMANY

Siebert Industrieelektronik GmbH
Siebertstrasse, D-66571 Eppelborn
P.O. Box 11 30, D-66565 Eppelborn
Phone +49 (0)6806 980-0, Fax +49 (0)6806 980-999
email: info.de@siebert-group.com

AUSTRIA

Siebert Österreich GmbH
Mooslackengasse 17, A-1190 Wien
Phone +43 (0)1 890 63 86-0, Fax +43 (0)1 890 63 86-99
email: info.at@siebert-group.com

FRANCE

Siebert France Sarl
4 rue de l'Abbé Louis Verdet, F-57200 Sarreguemines
P.O. Box 90 334, F-57203 Sarreguemines Cédex
Phone +33 (0)3 87 98 63 68, Fax +33 (0)3 87 98 63 94
email: info.fr@siebert-group.com

ITALY

Siebert Italia Srl
Via Galileo Galilei 2A, I-39100 Bolzano (BZ)
Phone +39 (0)471 053753 Fax +39 (0)471 053754
email info.it@siebert-group.com

THE NETHERLANDS

Siebert Nederland B.V.
Jadedreef 26, NL-7828 BH Emmen
Phone +31 (0)591-633444, Fax +31 (0)591-633125
email: info.nl@siebert-group.com

SWITZERLAND

Siebert AG
Bützbergstrasse 2, P.O. Box 91, CH-4912 Aarwangen
Phone +41 (0)62 922 18 70, Fax +41 (0)62 922 33 37
email: info.ch@siebert-group.com

2 Legal note

© Siebert Industrieelektronik GmbH

This operation manual has been prepared with the utmost care. However, we do not accept any liability for possible errors. We always appreciate your suggestions for improvement, corrections, comments and proposals. Please contact us: editing@siebert-group.com

Siebert[®], LRD[®] and XC-Board[®] are registered trademarks of Siebert Industrieelektronik GmbH. All other product names mentioned herein may be trademarks or registered trademarks of their respective owners.

We reserve the right to make alterations to the technical data and delivery options without notice. - All rights reserved, including the rights of translation. No part of this document may in any form or by any means (print, photocopy, microfilm or any other process) be reproduced or by using electronic systems be processed, copied or distributed without our written permission.

Table of contents

1 Contact	2
2 Legal note	3
3 Safety precautions	6
Important information	6
Safety	6
Intended use.....	6
Mounting and installation.....	6
Grounding.....	6
EMC measures.....	7
Disposal.....	7
4 Model designation	8
Model designation	8
Unit construction.....	8
5 Quick start for numerical operation mode (INT32 format)	9
Step 1: Open project	9
Step 2: Switch to project view	9
Step 3: Install the GSDML file of the ad and add the display.....	9
Step 4: Establish a connection to the display.....	10
Step 5: Add sub-module to the display and define address range	10
Step 6: Assign a PROFINET device name to the display	11
Step 7: Download configuration in the controller.....	11
Step 8: Transmit data to the display.....	12
6 Quick start for alphanumeric operation mode (ASCII format)	13
Step 1 to 4: See quick start for numeric operation mode (INT32 format)	13
Step5: Add sub-module to the display and define address range	13
Step 6 and 7: See quick start for numeric operation mode (INT32-Format).....	13
Step 8: Transmit values and texts to the display.....	13
7 Messages on the display	15
8 Further settings	16
9 Setting the display settings during initialization (numeric operation mode only)	17
Decimal points	17
Offset, scale factor (multiplier) and divisor	17
Threshold values Range	17
Flags	17
Attributes for flashing and blinking	18
Format	18
10 Flashing modes and display attributes	19

11 Flags	20
12 Setting the display mode in normal operation	21
Setting the basic brightness (luminosity of the LEDs)	21
Setting of the display modes	21
13 Technical data	23
Fieldbus	23
Power supply	23
Housing colors	23
Ambient conditions	23
Unit properties	24
Max. power consumption	25
Dimensions and weights	26

3 Safety precautions

Important information

Read these operating instructions before starting the unit. They provide you with important information on the use, safety and maintenance of the units. This helps you to protect yourself and prevent damage to the unit.



Information intended to help you to avoid death, bodily harm or considerable damage to property is highlighted by the warning triangle shown here; it is imperative that this information be properly heeded.

The operating instructions are intended for trained professional electricians familiar with the safety standards of electrical technology and industrial electronics.

Store these operating instructions in an appropriate place.

The manufacturer is not liable if the information in these operating instructions is not complied with.

Safety



Components inside the units are energized with electricity during operation. For this reason, mounting and maintenance work may only be performed by professionally-trained personnel while observing the corresponding safety regulations.

The repair and replacement of components and modules may only be carried out by the manufacturer for safety reasons and due to the required compliance with the documented unit properties.

The units do not have a power switch. They are operative as soon as the operating voltage is applied.

Intended use

The units are intended for use in industrial environments. They may only be operated within the limit values stipulated by the technical data.

When configuring, installing, maintaining and testing the units, the safety and accident-prevention regulations relevant to use in each individual case must be complied with.

Trouble-free, safe operation of the units requires proper transport, storage, installation, mounting and careful operation and maintenance of the units.

Mounting and installation

The attachment options for the units were conceived in such a way as to ensure safe, reliable mounting.



The user must ensure that the attachment hardware, the unit carrier and the anchoring at the unit carrier are sufficient to securely support the unit under the given surrounding conditions.

The units are to be mounted in such a way that they can be opened up while mounted. Sufficient space for the cables must be available in the unit near the cable entries.

Sufficient space is to be kept clear around the units to ensure air circulation and to prevent the build-up of heat resulting from use. The relevant information must be heeded in the case of units ventilated by other means.



When the housing fasteners are opened, the front frame of the housing hinges out upward or downward (depending on the unit version) automatically.

Grounding

All devices are equipped with a metal housing. They comply with safety class I and require a protective earth connection. The connecting cable for the operating voltage must contain a protective earth wire of a sufficient cross section (DIN VDE 0106 part 1, DIN VDE 0411 part 1).

EMC measures

The devices comply with the current EU Directive (EMC Directive) and provide the required interference immunity. Observe the following when connecting the operating voltage and data cables:

Use shielded data cables.

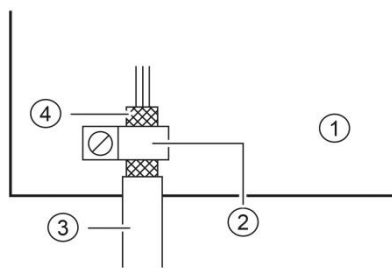
The data and operating voltage cables must be laid separately. They may not be laid together with heavy-current cables or other interference-producing cables.

The cable thickness must be properly assessed (DIN VDE 0100 Part 540).

The cable lengths inside the units are to be kept as short as possible to prevent interference. This applies especially to unshielded operating voltage cables. Shielded cables are also to be kept short due to any interference which might be emitted by the shielding.

Neither excessively long cables nor cable loops may be placed inside the units.

The connection of the cable shielding to the functional ground (PE) must be as short and low-impedance as possible. It should be made directly to the mounting plate over a large area with a conductive clip:



- | | |
|------------------|--------------------|
| ① mounting plate | ② conductive clamp |
| ③ data lines | ④ cable shielding |

The cable shielding is to be connected at both cable ends. If equipotential bonding currents are expected due to the cable arrangement, electrical isolation is to be performed on one side. In this case, capacitive connection (approx. $0.1\mu\text{F}/600\text{ V AC}$) of the shielding on the isolated side must occur.

Disposal

Units or unit parts which are no longer needed are to be disposed of in accordance with the regulations in effect in your country.

4 Model designation

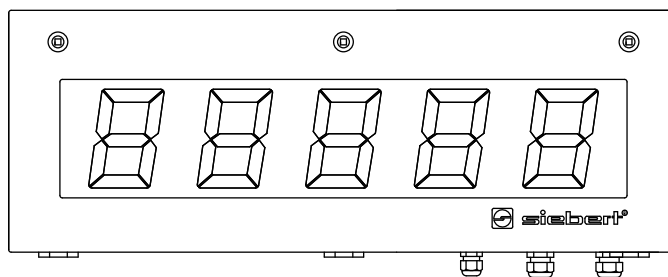
Model designation

This manual applies to units with the following model designation (x = the 'x's in the model designation indicate the size and design of the units):

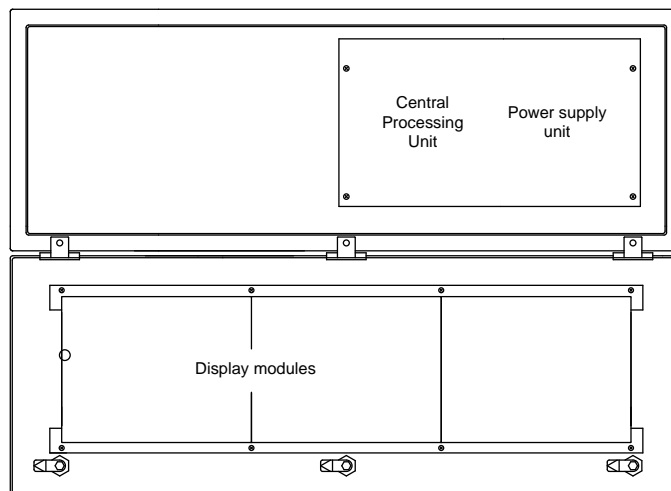
S302-xx/xx/xx-xxx/xx-N0

Unit construction

The following figure shows model type S302-05/10/xx-xxx/xx-xx as example for the other model types. The front frame of the housing is locked with quick-action releases. When opening the unit the front frame hinges downward.



The following figure shows the unit when open.



Units with double-sided display show the same information on the front and on the rear side.

5 Quick start for numerical operation mode (INT32 format)

The display is put into operation with the following steps. The display then shows the values sent via PROFINET.

The screenshots were created with the following hardware and software. For other engineering frameworks, the descriptions shown in this user's guide may differ from the screen display on your device.

Display	XC-Board
Engineering-Framework	Siemens TIA Portal V13, Service Pack1 , Update 9
SPS	Siemens S7-1513-1 PN
Operating system	Microsoft Windows 7 Professional, 64 Bit, English

The quick start describes the parameterization of the display. Operation of the TIA Portal is required. The devices are delivered with the PROFINET name 'siebert-display'.

Step 1: Open project

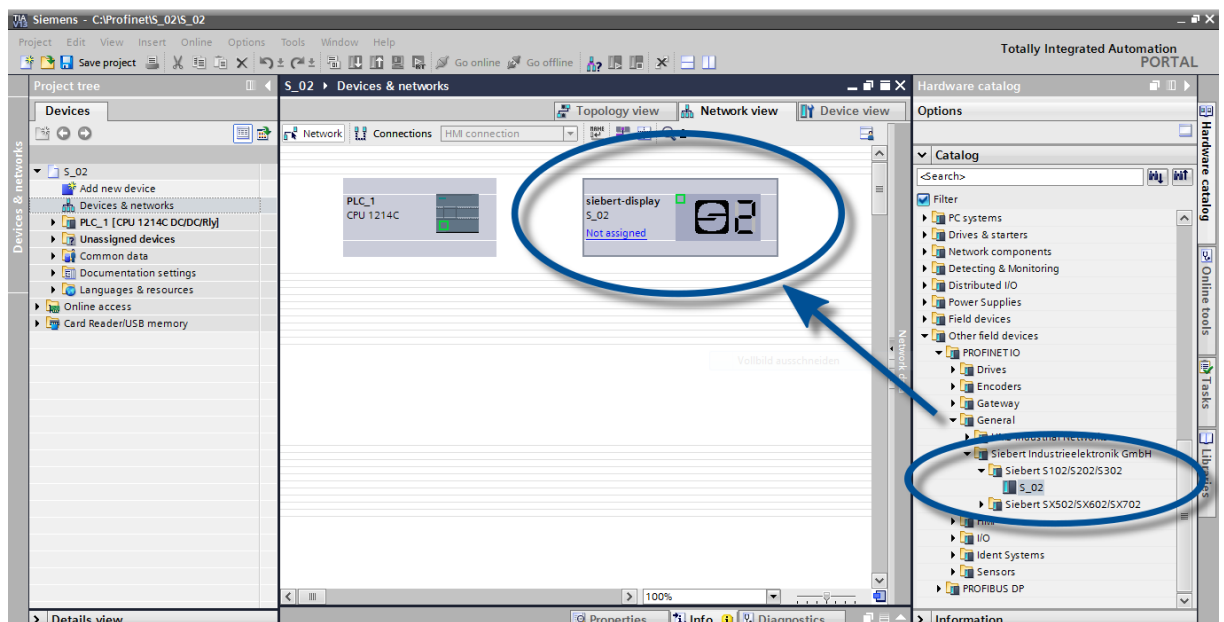
Open your project in the Engineering-Framework.

Step 2: Switch to project view

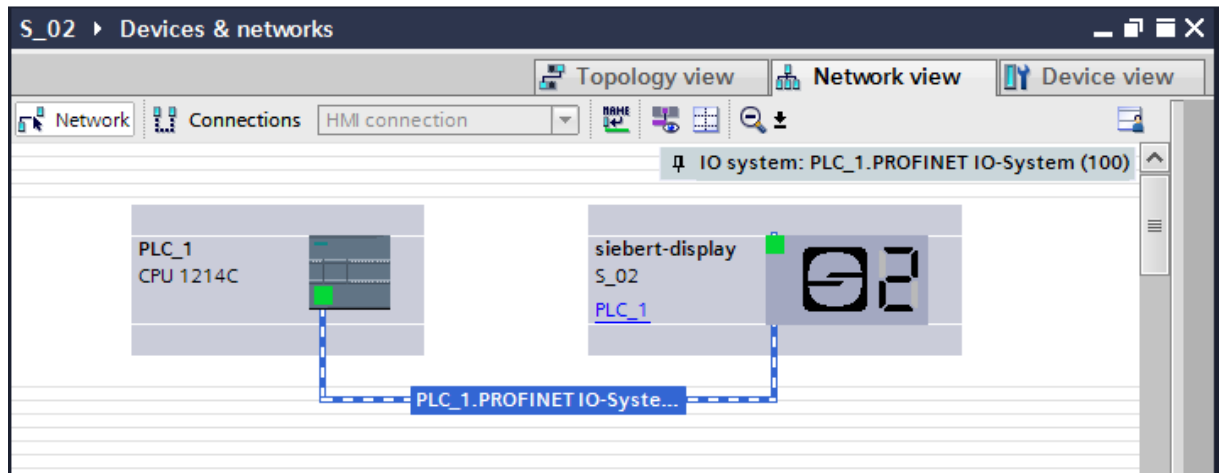
Switch to project view.

Step 3: Install the GSDML file of the ad and add the display

Install the GSDML file of the display. You find the file on the supplied data carrier or at www.siebert-group.com. After installation, the display is listed in the hardware catalog. Add the module 'siebert-display' to 'Devices & Networks/Network view'.



Step 4: Establish a connection to the display

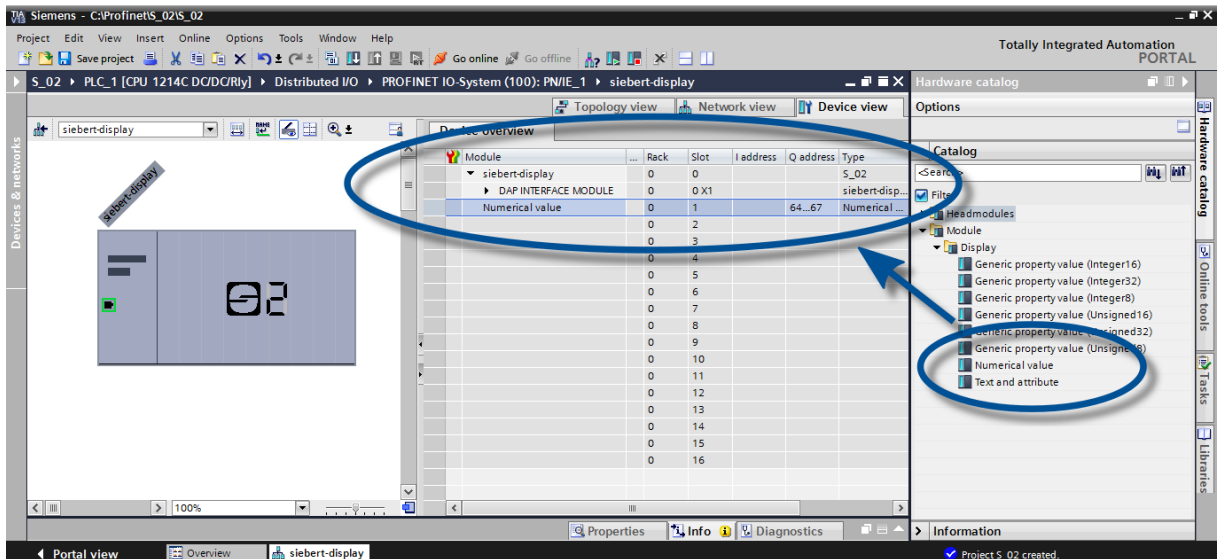


Assign the display to the desired control in the network view. Then the PROFINET connection is shown.

Step 5: Add sub-module to the display and define address range

Add the module 'Numerical Value' from the hardware catalog to the device overview.

This specifies that the display expects the values to be shown in INT32 format. The module occupies 4 bytes (in this example the addresses 64 to 67).



The screenshot shows the 'Hardware catalog' and 'Device overview' in Siemens TIA Portal. The 'Device overview' table lists modules for the 'siebert-display' rack. A blue circle highlights the 'Numerical value' module in slot 1, which is assigned to I address 64 and Q address 67. The 'Hardware catalog' on the right shows the 'Numerical value' module selected under the 'Display' category.

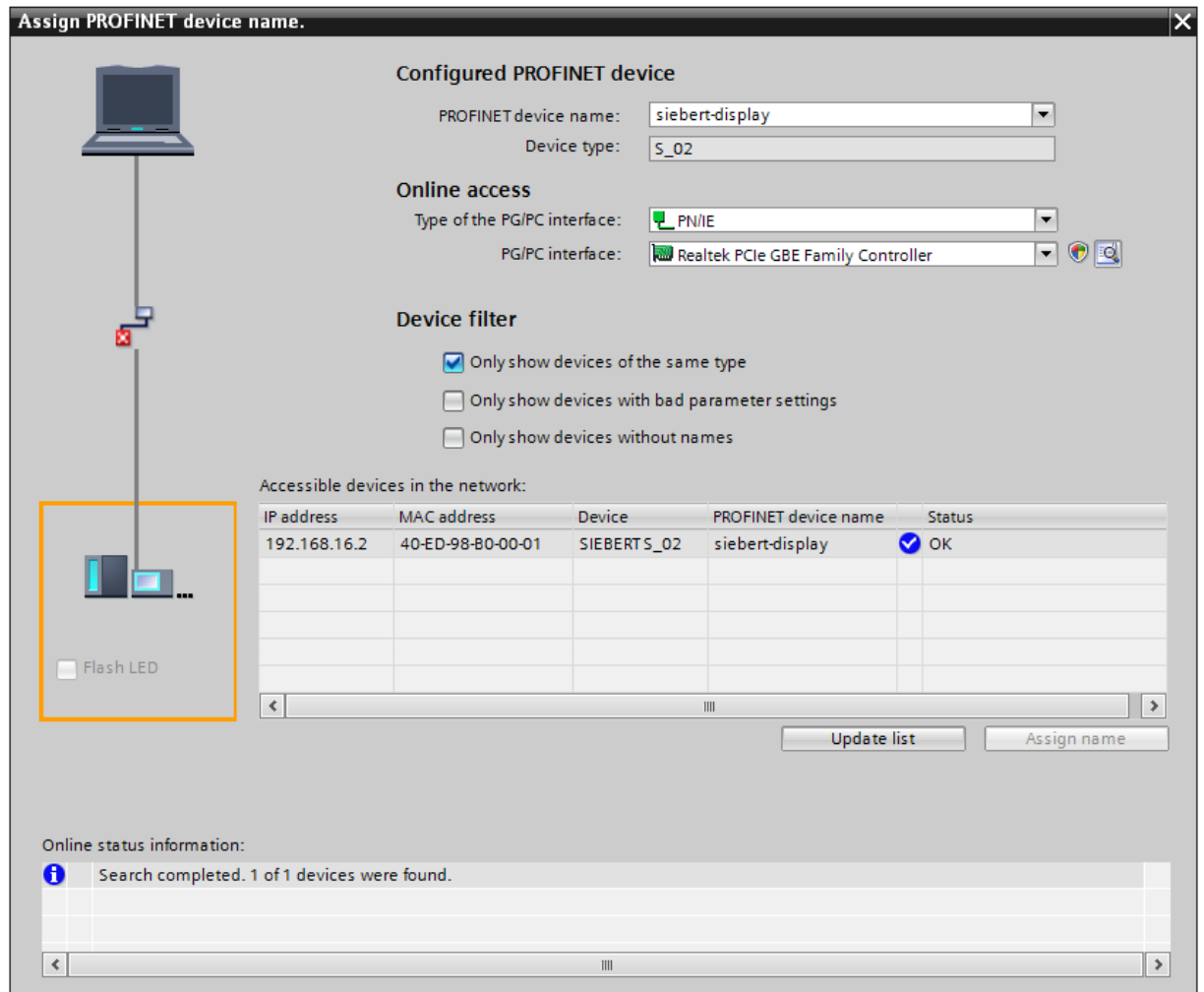
Module	Rack	Slot	I address	Q address	Type
siebert-display	0	0		S_02	siebert-disp...
DAP INTERFACE MODULE	0	0	X1		
Numerical value	0	1	64..67		Numerical ...
	0	2			
	0	3			
	0	4			
	0	5			
	0	6			
	0	7			
	0	8			
	0	9			
	0	10			
	0	11			
	0	12			
	0	13			
	0	14			
	0	15			
	0	16			

You can change the name given by the TIA Portal.

Step 6: Assign a PROFINET device name to the display

Now the IP address and the device name are assigned to the display.

After the data is transferred successfully to the display, the configuration is displayed as follows in the engineering tool.

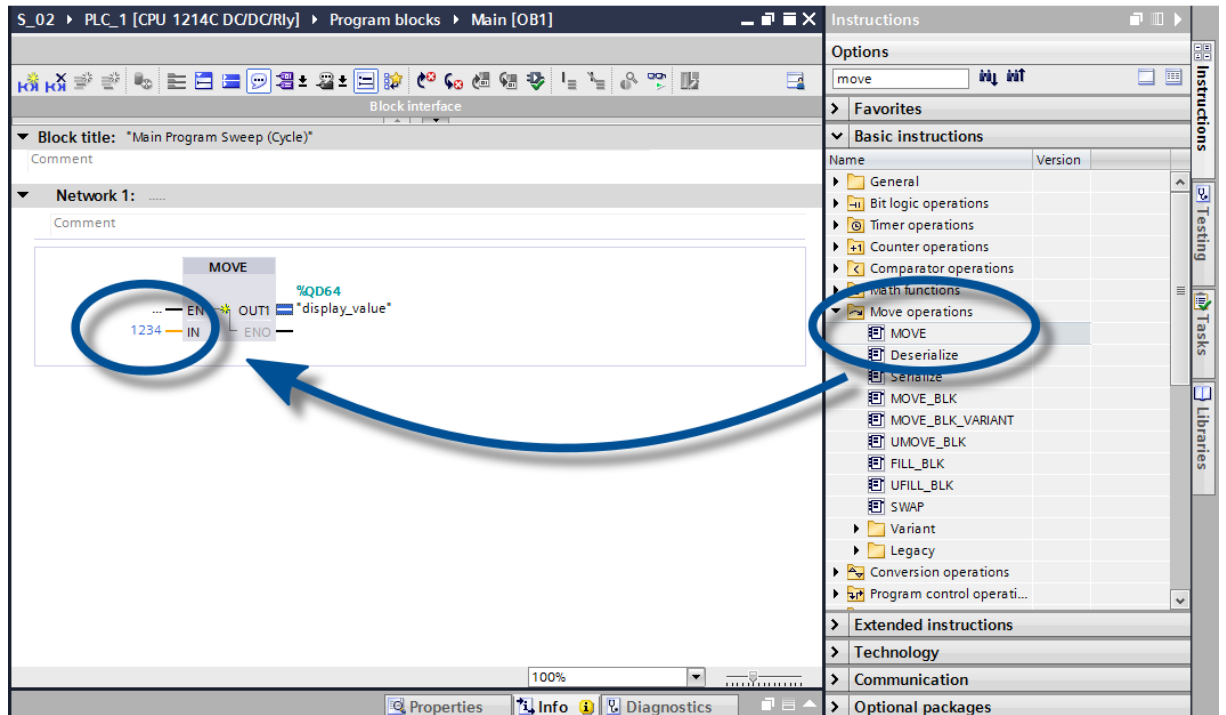


Step 7: Download configuration in the controller

After the control can connect via PROFINET with the display. As soon as the connection is established the display shown the '0'. The display is now programmed to receive numerical values in INT32 format.

Step 8: Transmit data to the display

To transmit a value to the display you can for example, create a function chart with the instruction 'MOVE'. In the following screenshot the number '1234' is transmitted.



6 Quick start for alphanumeric operation mode (ASCII format)

If the display receives data in ASCII format it can display also characters and special characters which can be displayed by seven segments besides the digits.

Received characters which can not be displayed with seven segments are displayed as $\bar{_}$.

Step 1 to 4: See quick start for numeric operation mode (INT32 format)

Step 1: Open project

Step 2: Switch to project view

Step 3: Install the GSDML file of the ad and add the display

Step 4: Establish a connection to the display

Step5: Add sub-module to the display and define address range

Add the module 'Text and attribute' from the hardware catalog to the device overview. The two sub-modules 'Text (ASCII)' and 'Attribute' are added automatically.

This specifies that the display occupies two blocks in the output data area: 20 bytes for the text and 2 bytes for the attributes.

Step 6 and 7: See quick start for numeric operation mode (INT32-Format)

Step 6: Assign a PROFINET device name to the display

Step 7: Download the configuration to the controller

Step 8: Transmit values and texts to the display

Since the display has two address areas in this operating mode, two function blocks (in the example 'Network 1' and 'Network 2') must also be defined.

In 'Network 1' a function plan is defined with the 'MOVE' statement. In the example, the output area begins with AD64. The following screenshot uses the string 'abcd'.

In 'Network 2', a further function plan is defined with the 'MOVE' statement. With this, the attributes are controlled. Attributes define the display type. In this example, the value '16 # 0033' is used to define fast flashing.

The string sent to the display can be up to 20 bytes long. The displayed bytes are dependent on the scope of the display. The not shown sequence bytes are ignored.

The attributes are binary coded. Its structure is described in the chapter 'Attributes'.

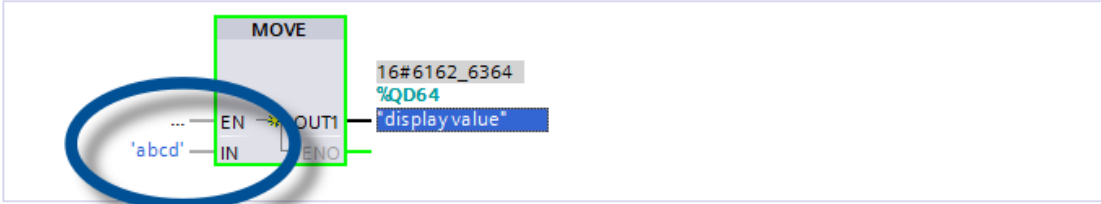
S102-04 ▶ PLC_1 [CPU 1214C DC/DC/Rly] ▶ Program blocks ▶ Main [OB1]

PLC programming

Block interface

▼ Block title: "Main Program Sweep (Cycle)"
Comment

▼ Network 1:
Comment

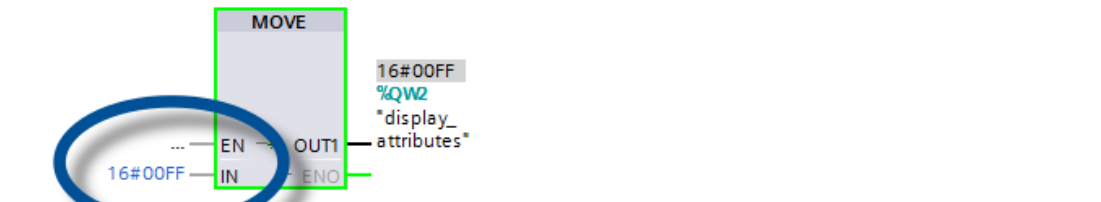


MOVE

16#6162_6364
%QD64
"display value"

... EN → OUT1
'abcd' IN ← ENO

▼ Network 2:
Comment



MOVE

16#00FF
%QW2
"display_ attributes"

... EN → OUT1
16#00FF IN ← ENO

7 Messages on the display

The data traffic via PROFINET is indicated with status LEDs on both RJ45 sockets. The meaning is the same for both ports.

LED green	LED yellow	Meaning
off	off	<ul style="list-style-type: none"> ▪ no power supply ▪ no network connection
on	ons	<ul style="list-style-type: none"> ▪ network connection exists
on	flashing	<ul style="list-style-type: none"> ▪ initialization phase ▪ application relation is set up
on	on	<ul style="list-style-type: none"> ▪ application relation is established

If the connection can not be established or faults occur during operation the display shown the error message 'ERR'. Possible causes are IP problems due to incorrect network parameters, multiple device names, command of undefined properties or other fieldbus errors.

Once the connection has been established, the following messages can be displayed:

With a 4-digit display	
[- -]	Until the first time user data is received, the display shows a frame on its display alternating with the above status messages.
≡ ≡ ≡ ≡	The "PROFINET flashing" diagnostic function, which can be called from the engineering tool, is signaled by three horizontal lines at each position.
UUUU	Underflow: The value sent to the display can not be displayed on the display. For example, the value '-1500' can not be displayed on a four-digit device.
OOOO	Overflow: The value sent to the display can not be displayed on the display. For example, the value '-26550' can not be displayed on a four-digit device.

8 Further settings

With the previous steps, the display shows the sent values with their default settings (factory settings).

In the numeric mode (INT32 format) these settings can be changed by changing the initialization values. These are transferred once to the display during connection setup via PROFINET.

The following setting options are available by changing the initialization values, see chapter setting the display settings during initialization (numeric operation mode only):

- Number and position of the decimal points
- Offset, scale factor (multiplier), and divisor for the conversion formula of the numerical value
- Upper and lower thresholds for automatically changing the display mode
- Luminosity of the LEDs
- Blinking in different modes when thresholds are exceeded or fallen below
- Lowering or raising the LED brightness when exceeding or falling below the thresholds
- Position of the displayed value
- Number of leading zeros

In addition, the display offers the possibility - in both operation modes (INT32 and ASCII format) - to change all previously mentioned settings as well as the setting of the basic brightness (LED brightness) in 16 steps during normal operation (see chapter setting of the display mode in normal operation mode).

9 Setting the display settings during initialization (numeric operation mode only)

Initialization parameters are loaded to the display once. They cannot be changed during operation.

Decimal points

Decimal Dots (property number 1)

The number and position of the decimal points can be defined with the help of a bit mask. For example, multiple decimal points can be used to display a date or codes.

A set bit corresponds with a set decimal point.

The least significant bit corresponds to the decimal point of the least significant digit. If, for example, the number '1234' is to be displayed with a decimal point between the 100th and the 10th digit, the bit mask must be set to the value '0x04' and '12 .34' appears on the display.

Offset, scale factor (multiplier) and divisor (property numbers 2, 3 and 12)

The formula that can be stored in the display allows you to display values in other units, such as degrees Fahrenheit in degrees Celsius, kilograms in tons, miles in kilometers, or adding an offset.

This initialization parameter consists of the values offset, scale factor (multiplier) and divisor.

Meaning	Property number	Data type	Default value
Offset	2	SINT32	0
Scale Factor	3	SINT16	1
Divisor	12	UINT16 (unsigned)	1

The calculation is based on the following linear function:

Displayed value = offset + scale factor (multiplier) / divisor x sent value

As a scale factor, integers are possible. Other factors can be formed by a combination of 'ScaleFactor' and 'Divisor'. For example, a multiplication with '13, 42' can be generated by the scale factor '1342' and divisor '100'.

Threshold values

Range (property numbers 4 und 5)

This initialization value defines the upper and lower thresholds at which the display automatically changes its display attribute.

Meaning	Property number	Data type	Default values
Upper bound	4	SINT32	-2147483648
Lower bound	5	SINT32	-2147483648

No threshold values are defined in the delivery state. The default value -2147483648 (hex: 16#80000000) commands this.

If a value is received outside the defined thresholds, the display automatically changes from 'standard' to 'out of range'. As soon as a value is received within the defined limits, the display returns to standard.

Example: For a temperature value display, the display should change its display mode, both when the temperature falls below 0 degrees Celcius and when it exceeds 100 degrees Celcius. For this, the values Upper bound = 100 and Lower bound = 0 must be entered.

Flags (property number 6)

In this initialization value (type INT16), display properties are set.

See chapter Flags.

Attributes for flashing and blinking (property numbers 7 and 9)

With these initialization values, the flashing modes for the standard display and the 'out of range' display can be defined.

See chapter Flashing modes.

Format (property numbers 10 and 11)

These two initialization parameters define the alignment of the displayed values and the number of leading zeros.

Meaning	Property number	Data type	Default values
Minimum number of digits	10	UINT8	1
Minimum width	11	UINT8	30

The minimum number of digits displayed is defined as 'Minimum number of digits'. If the value to be displayed has less digits than 'Minimum number of digits', the display is filled with zeros on the left side.

Example: For a six-digit display the 'Minimum number of digits' is set to 6. If the number '1234' is sent to the display, the display shows '001234'.

'Minimum Width' defines the minimum number of digits used for display. If the number representation contains less characters (including the sign), the space is filled with blanks on the left side.

Example: To display a number on the left-hand side, set the parameter 'Minimum Width' to '1'.

10 Flashing modes and display attributes

The display can show the values to be displayed in a plurality of brightnesses and blinking patterns, which are referred to as "display attribute".

For the initialization parameters, two blocks are defined: a block for 'standard attributes' (property number 7), the other for 'out of range attributes' (property number 9). In each block the values 0%, 25%, 50% and 100% can be entered.

So, for example, the following typical display effects can be defined:

Effect	1/4	2/4	3/4	4/4	Attribute value
25% of the basic brightness	25%	25%	25%	25%	16#0055
50% of the basic brightness	50%	50%	50%	50%	16#00AA
100% of the basic brightness	100%	100%	100%	100%	16#00FF
Pulsation	0%	0%	0%	0%	16#0000
Brief flashing	0%	0%	0%	100%	16#0003
Fast flashing	0%	100%	0%	100%	16#0033
Slow flashing	0%	0%	100%	100%	16#000F
Short darkening	0%	100%	100%	100%	16#003F
Low beaming	0%	25%	50%	100%	16#001B
High beaming	100%	50%	25%	0%	16#00E4

If the value '0%' is entered in all four fields, the display switches to a pulsating display. This prevents an inadvertent dark switching.

In the case of displays with multicolor LEDs (red and green), the attribute for the red color is set with the least significant byte and the attribute for the green color with the next higher byte. The meaning of the bytes for red and green is identical.

With the same attributes for red and green the display shines orange. Diverse mixed colors, flashing effects and color changing effects can be defined by different attributes, for example:

25% of the basic brightness, orange	16#5555
50% of the basic brightness, orange	16#AAAA
100% of the basic brightness, orange	16#FFFF
Slow flashing (off – on), red	16#000F
Slow inverse flashing (on – off), green	16#F000
Flashing red/green alternately	16#F00F

The dark switching is possible by the global 'property 0'. Here the decimal point of the least significant decade flashes.

11 Flags

Bit number										Meaning	Default	
31...9	8	7	6	5	4	3	2	1	0			
:	:	:	:	:	:	:	:	:	:	0	Circumferential frame off	
:	:	:	:	:	:	:	:	:	:	1	Circumferential frame on	X
:	:	:	:	:	:	:	:	:	:	0	Underflow off	
:	:	:	:	:	:	:	:	:	:	1	Underflow on	X
:	:	:	:	:	:	:	:	:	:	0	Overflow off	
:	:	:	:	:	:	:	:	:	:	1	Overflow on	X
:	:	:	:	:	:	:	:	:	:	0	Invalid initial value off	X
:	:	:	:	:	:	:	:	:	:	1	Invalid initial value on	
:	:	:	:	:	:	:	:	:	:	0	Smart-Dot-Function off	
:	:	:	:	:	:	:	:	:	:	1	Smart-Dot-Function on	X
:	:	:	:	:	:	:	:	:	:	0 0	The decimal places are truncated.*	
:	:	:	:	:	:	:	:	:	:	0 1	The decimal places are rounded up*	
:	:	:	:	:	:	:	:	:	:	1 0	The decimal places are rounded down.*	
:	:	:	:	:	:	:	:	:	:	1 1	The decimal places are rounded commercially.*	X
:	:	:	:	:	:	:	:	:	:	0	Leading zeros off	
:	:	:	:	:	:	:	:	:	:	1	Leading zeros on	X
:	:	:	:	:	:	:	:	:	:	0	Value is displayed in decimal form	X
:	:	:	:	:	:	:	:	:	:	1	Value is displayed in hexadecimal form	
:	:	:	:	:	:	:	:	:	:	0	Without function. The bits are to be set to '0'	X

* only with activated Smart-Dot-Function

Leading zeros

On the places in front of the value \square is shown automatically

Smart-Dot-Function

The display automatically moves the decimal point so that the decimal value is displayed completely when the value exceeds the maximum display capacity.

Invalid initial value

If the value sent to the display is invalid, Ξ is shown on each position.

Overflow

If the value sent to the display is that large that it cannot be displayed on the display \square is shown on each position on the upper segments.

If the overflow function is deactivated, the value that can be displayed as large as possible is displayed for a larger number than can be displayed. For example: numbers larger or equal 9999 are always displayed with '9999' on a four-digit display.

Underflow

If the value sent to the display is that small that it cannot be displayed on the display \sqcup is shown on each position of the lower segments.

If the underflow function is deactivated the value that can be displayed as small as possible is displayed for a smaller number than can be displayed. For example: numbers smaller or equal -9999 are always displayed with '-999' on a four-digit display.

Circumferential frame

Until user data is received for the first time the display alternately displays $\square \Xi \Xi \square$ or various status messages on its display.

12 Setting the display mode in normal operation

The settings defined in chapter 'Setting the display settings during initialization' are defined in the engineering tool as initialization parameters and sent to the display once during the initialization of PROFINET. These settings can not be changed during normal operation.

The displays also allow to change these parameters during normal operation. Up to four 'generic property value modules' can be added.

A property number is assigned to each of these modules. The display then shows the information sent via this module via PROFINET on the desired parameter.

Setting the basic brightness (luminosity of the LEDs)

The basic brightness of the display is controlled with the following 'global properties':

Global property number	Meaning	Allowed values
1	Select luminosity value	0 = Standard luminosity (default) 1 = Out of range luminosity
2	Standard luminosity	0 = off : 8 = middle luminosity (default) : 15 = maximum luminosity
3	'out of range'-luminosity	0 = off : 8 = middle luminosity (default) : 15 = maximum luminosity
4	Blanking of the display	0 = Display is dark all others: display lights (default)

Example: To darken the display at any time via the PLC the module 'generic property value (Integer8)' is added. The property-group 'global properties' and the property number '4' are set in the engineering tool in the initialization parameters of this module.

During operation, a number is transferred to this module during cyclic data transmission. If this number is set to '0', the display will be dark. During darkness, the decimal point of the least significant decade flashes. As soon as a value other than '0' is transmitted, the display switches its display on.

Setting of the display modes

With these setting options, the representation of the number which is transmitted cyclically via PROFINET is influenced. To control a specific property, a 'generic property value module' is added.

In the parameters of this module, in the Property-group the property 'Property of display field' is selected and in the field 'Property-number' the desired property is entered in the 'Property number' field.

The description of the properties can be found in chapter: Setting the display mode during initialization (numeric mode only).

Property of display field number	Property	Operation mode
1	Decimal Dots	numeric (INT32)
2	Offset	numeric (INT32)
3	Scale Factor	numeric (INT32)
4	Range – Upper bound	numeric (INT32)
5	Range – Lower bound	numeric (INT32)
6	Flags	numeric (INT32)
7	Standard-attribute	numeric (INT32)
8	Text-attribute	alphanumeric (ASCII)
9	out of range-attribute	numeric (INT32)
10	Format – Minimum number of digits	numeric (INT32)
11	Format – Minimum width	numeric (INT32)
12	Divisor	numeric (INT32)

13 Technical data

Fieldbus

Interface	PROFINET IO RT, conformance class CC-B
MAC address	The MAC address for the PROFINET coupling is on the top side of the device.
Integrated switch	PROFINET IO IRT, conformance class CC-C

Power supply

The screw-type terminals for the power supply are located on the power supply unit in the bottom section of the housing. They have the following designations:

Devices for a power supply 115 V AC or 230 V AC	L, N and PE
Devices for a power supply 24 V DC	+, – and PE

Housing colors

Case front	RAL 5002ultramarine
Case rear part	RAL 7035 light grey

Ambient conditions

Operating temperature	0...55 °C, with heating -20...55 °C
Storage temperature	-30...85 °C
Relative humidity	max. 95 % (non condensing)

Unit properties

The model designation is structured as follows

S302		-	[] []	/	[] []	/	[] [] []	-	[] []	-	[] []
No dimension symbol	0	:	:	:	:	:	:	:	:	:	:
Dimension symbol	F	:	:	:	:	:	:	:	:	:	:
1 digit	1	:	:	:	:	:	:	:	:	:	:
2 digits	2	:	:	:	:	:	:	:	:	:	:
↓		:	:	:	:	:	:	:	:	:	:
8 digits	8	:	:	:	:	:	:	:	:	:	:
Character height 57 mm	0 6	:	:	:	:	:	:	:	:	:	:
Character height 100 mm	1 0	:	:	:	:	:	:	:	:	:	:
Character height 160 mm	1 6	:	:	:	:	:	:	:	:	:	:
Character height 250 mm	2 5	:	:	:	:	:	:	:	:	:	:
LED standard	0	:	:	:	:	:	:	:	:	:	:
LED for outdoor use	2	:	:	:	:	:	:	:	:	:	:
Character color red	R	:	:	:	:	:	:	:	:	:	:
Character color green	G	:	:	:	:	:	:	:	:	:	:
Character color white	W	:	:	:	:	:	:	:	:	:	:
Character color red/green/orange switchable	M	:	:	:	:	:	:	:	:	:	:
Display readable on one side	1	:	:	:	:	:	:	:	:	:	:
Display readable on both sides	2	:	:	:	:	:	:	:	:	:	:
Housing Steel sheet, powder-coated	0	:	:	:	:	:	:	:	:	:	:
Housing Steel sheet, 2-layer powder-coated	1	:	:	:	:	:	:	:	:	:	:
Housing Stainless steel V2A, powder-coated	2	:	:	:	:	:	:	:	:	:	:
Housing Stainless steel V2A, brushed	3	:	:	:	:	:	:	:	:	:	:
Housing Stainless steel V4A, brushed	5	:	:	:	:	:	:	:	:	:	:
Protection type IP54	0	:	:	:	:	:	:	:	:	:	:
Protection type IP65	1	:	:	:	:	:	:	:	:	:	:
Protection type IP54 with climate adjustment	2	:	:	:	:	:	:	:	:	:	:
Protection type IP54 with climate adjustment and heating	4	:	:	:	:	:	:	:	:	:	:
Wall mounting, Cable entry point from the bottom	0	:	:	:	:	:	:	:	:	:	:
Wall mounting, Cable entry point from the top	1	:	:	:	:	:	:	:	:	:	:
Hanging installation, Cable entry point from the bottom	2	:	:	:	:	:	:	:	:	:	:
Hanging installation, Cable entry point from the top	3	:	:	:	:	:	:	:	:	:	:
Wall- and Hanging installation, Cable entry point from the bottom	4	:	:	:	:	:	:	:	:	:	:
Wall- and Hanging installation, Cable entry point from the top	5	:	:	:	:	:	:	:	:	:	:
Power supply 230 V AC ±15 %, 50 Hz	A	:	:	:	:	:	:	:	:	:	:
Power supply 24 V DC ±15 %	B	:	:	:	:	:	:	:	:	:	:
Power supply 115 V AC ±15 %, 60 Hz	C	:	:	:	:	:	:	:	:	:	:
Interface	N 0	:	:	:	:	:	:	:	:	:	:

Max. power consumption

Units with one-sided display	[VA] ¹⁾
1 digit	
S302-x1/10/xx-1xx/xx-xx	12
S302-x1/16/xx-1xx/xx-xx	22
S302-x1/25/xx-1xx/xx-xx	26
2 digits	
S302-x2/06/xx-1xx/xx-xx	12
S302-x2/10/xx-1xx/xx-xx	15
S302-x2/16/xx-1xx/xx-xx	37
S302-x2/25/xx-1xx/xx-xx	46
3 digits	
S302-x3/06/xx-1xx/xx-xx	13
S302-x3/10/xx-1xx/xx-xx	17
S302-x3/16/xx-1xx/xx-xx	51
S302-x3/25/xx-1xx/xx-xx	63
4 digits	
S302-x4/06/xx-1xx/xx-xx	14
S302-x4/10/xx-1xx/xx-xx	21
S302-x4/16/xx-1xx/xx-xx	64
S302-x4/25/xx-1xx/xx-xx	79
5 digits	
S302-x5/06/xx-1xx/xx-xx	15
S302-x5/10/xx-1xx/xx-xx	23
S302-x5/16/xx-1xx/xx-xx	77
S302-x5/25/xx-1xx/xx-xx	96
6 digits	
S302-x6/06/xx-1xx/xx-xx	16
S302-x6/10/xx-1xx/xx-xx	26
S302-x6/16/xx-1xx/xx-xx	91
S302-x6/25/xx-1xx/xx-xx	113
7 digits	
S302-x7/06/xx-1xx/xx-xx	17
S302-x7/10/xx-1xx/xx-xx	30
S302-x7/16/xx-1xx/xx-xx	104
S302-x7/25/xx-1xx/xx-xx	130
8 digits	
S302-x8/06/xx-1xx/xx-xx	18
S302-x8/10/xx-1xx/xx-xx	32

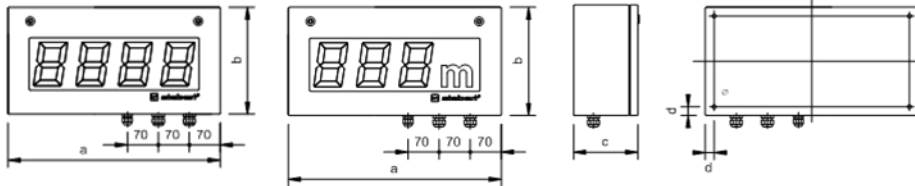
Units with double-sided display	[VA] ¹⁾
1 digit	
S302-x1/10/xx-2xx/xx-xx	16
S302-x1/16/xx-2xx/xx-xx	35
S302-x1/25/xx-2xx/xx-xx	42
2 digits	
S302-x2/06/xx-2xx/xx-xx	15
S302-x2/10/xx-2xx/xx-xx	21
S302-x2/16/xx-2xx/xx-xx	66
S302-x2/25/xx-2xx/xx-xx	83
3 digits	
S302-x3/06/xx-2xx/xx-xx	17
S302-x3/10/xx-2xx/xx-xx	26
S302-x3/16/xx-2xx/xx-xx	92
S302-x3/25/xx-2xx/xx-xx	116
4 digits	
S302-x4/06/xx-2xx/xx-xx	19
S302-x4/10/xx-2xx/xx-xx	33
S302-x4/16/xx-2xx/xx-xx	119
S302-x4/25/xx-2xx/xx-xx	150
5 digits	
S302-x5/06/xx-2xx/xx-xx	21
S302-x5/10/xx-2xx/xx-xx	38
S302-x5/16/xx-2xx/xx-xx	146
S302-x5/25/xx-2xx/xx-xx	184
6 digits	
S302-x6/06/xx-2xx/xx-xx	23
S302-x6/10/xx-2xx/xx-xx	43
S302-x6/16/xx-2xx/xx-xx	173
S302-x6/25/xx-2xx/xx-xx	217
7 digits	
S302-x7/06/xx-2xx/xx-xx	25
S302-x7/10/xx-2xx/xx-xx	51
S302-x7/16/xx-2xx/xx-xx	200
S302-x7/25/xx-2xx/xx-xx	250
8 digits	
S302-x8/06/xx-2xx/xx-xx	27
S302-x8/10/xx-2xx/xx-xx	55

- ¹⁾ The values given are approximate values. For units with built-in heating, the values for power consumption specified in the table increase by approx. 10 – 100 VA (exact values on request), depending on the unit size.
- ²⁾ The power consumption for the unit version model S302-xx/xx/0x-xxx/xx-xx is also valid for the unit version S302-xx/xx/2x-xxx/xx-xx (LEDs for external use).

Dimensions and weights

Units with one-sided display

The following figure shows unit versions S302-04/10/4x-1xx/xx-xx and S302-F3/10/4x-1xx/xx-xx representing the other unit versions listed in the following table.

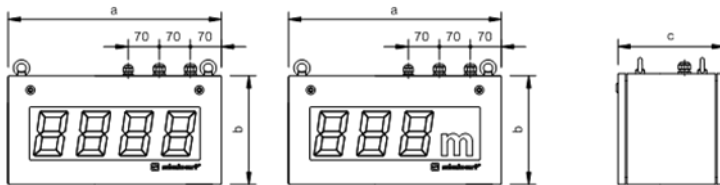


1 digit		a [mm]	b [mm]	c [mm]	d [mm]	Ø [mm]	Weight [kg] ¹⁾
S302-01/10/xx-1xx/xx-xx		330	245	110	16	7	6
S302-01/16/xx-1xx/xx-xx		390	300	110	20	9	7
S302-01/25/xx-1xx/xx-xx		570	400	110	20	9	11
2 digits	1 digit + dimension						
S302-02/06/xx-1xx/xx-xx	-	300	185	110	16	7	5
S302-02/10/xx-1xx/xx-xx	S302-F1/10/xx-1xx/xx-xx	330	245	110	16	7	6
S302-02/16/xx-1xx/xx-xx	S302-F1/16/xx-1xx/xx-xx	390	300	110	20	9	7
S302-02/25/xx-1xx/xx-xx	S302-F1/25/xx-1xx/xx-xx	570	400	110	20	9	11
3 digits	2 digits + dimension						
S302-03/06/xx-1xx/xx-xx	S302-F2/06/xx-1xx/xx-xx	300	185	110	16	7	5
S302-03/10/xx-1xx/xx-xx	S302-F2/10/xx-1xx/xx-xx	480	245	110	16	7	8
S302-03/16/xx-1xx/xx-xx	S302-F2/16/xx-1xx/xx-xx	670	300	110	20	9	11
S302-03/25/xx-1xx/xx-xx	S302-F2/25/xx-1xx/xx-xx	1030	400	110	20	9	18
4 digits	3 digits + dimension						
S302-04/06/xx-1xx/xx-xx	S302-F3/06/xx-1xx/xx-xx	300	185	110	16	7	5
S302-04/10/xx-1xx/xx-xx	S302-F3/10/xx-1xx/xx-xx	480	245	110	16	7	8
S302-04/16/xx-1xx/xx-xx	S302-F3/16/xx-1xx/xx-xx	670	300	110	20	9	11
S302-04/25/xx-1xx/xx-xx	S302-F3/25/xx-1xx/xx-xx	1030	400	110	20	9	18
5 digits	4 digits + dimension						
S302-05/06/xx-1xx/xx-xx	S302-F4/06/xx-1xx/xx-xx	400	185	110	16	7	6
S302-05/10/xx-1xx/xx-xx	S302-F4/10/xx-1xx/xx-xx	680	245	110	16	7	10
S302-05/16/xx-1xx/xx-xx	S302-F4/16/xx-1xx/xx-xx	960	300	110	20	9	14
S302-05/25/xx-1xx/xx-xx	S302-F4/25/xx-1xx/xx-xx	1500	400	110	20	9	24
6 digits	5 digits + dimension						
S302-06/06/xx-1xx/xx-xx	S302-F5/06/xx-1xx/xx-xx	400	185	110	16	7	6
S302-06/10/xx-1xx/xx-xx	S302-F5/10/xx-1xx/xx-xx	680	245	110	16	7	10
S302-06/16/xx-1xx/xx-xx	S302-F5/16/xx-1xx/xx-xx	960	300	110	20	9	14
S302-06/25/xx-1xx/xx-xx	S302-F5/25/xx-1xx/xx-xx	1500	400	110	20	9	24
7 digits	6 digits + dimension						
-	S302-F6/03/xx-1xx/xx-xx	300	185	110	16	7	5
S302-07/06/xx-1xx/xx-xx	S302-F6/06/xx-1xx/xx-xx	510	185	110	16	7	7
S302-07/10/xx-1xx/xx-xx	S302-F6/10/xx-1xx/xx-xx	870	245	110	16	7	12
S302-07/16/xx-1xx/xx-xx	S302-F6/16/xx-1xx/xx-xx	1100	300	110	20	9	16
S302-07/25/xx-1xx/xx-xx	S302-F6/25/xx-1xx/xx-xx	1730	400	110	20	9	28
8 digits	7 digits + dimension						
S302-08/06/xx-1xx/xx-xx	S302-F7/06/xx-1xx/xx-xx	510	185	110	32	7	7
S302-08/10/xx-1xx/xx-xx	S302-F7/10/xx-1xx/xx-xx	870	245	110	32	7	12

¹⁾ The figures shown are approximate values.

Units with double-sided display

The following figure shows unit versions S302-04/10/4x-2xx/xx-xx and S302-F3/10/4x-2xx/xx-xx representing the other unit versions listed in the following table.



Units with 57mm character height (S302-xx/06/xx-2xx/xx-xx) have 2 instead of 4 eyelets.

1 digit		a [mm]	b [mm]	c [mm]	Weight [kg] ¹⁾
S302-01/10/xx-2xx/xx-xx		330	245	170	9
S302-01/16/xx-2xx/xx-xx		390	300	170	11
S302-01/25/xx-2xx/xx-xx		570	400	170	17
2 digits	1 digit + dimension				
S302-02/06/xx-2xx/xx-xx	-	300	185	170	7
S302-02/10/xx-2xx/xx-xx	S302-F1/10/xx-2xx/xx-xx	330	245	170	9
S302-02/16/xx-2xx/xx-xx	S302-F1/16/xx-2xx/xx-xx	390	300	170	11
S302-02/25/xx-2xx/xx-xx	S302-F1/25/xx-2xx/xx-xx	570	400	170	17
3 digits	2 digits + dimension				
S302-03/06/xx-2xx/xx-xx	S302-F2/06/xx-2xx/xx-xx	300	185	170	7
S302-03/10/xx-2xx/xx-xx	S302-F2/10/xx-2xx/xx-xx	480	245	170	12
S302-03/16/xx-2xx/xx-xx	S302-F2/16/xx-2xx/xx-xx	670	300	170	17
S302-03/25/xx-2xx/xx-xx	S302-F2/25/xx-2xx/xx-xx	1030	400	170	27
4 digits	3 digits + dimension				
S302-04/06/xx-2xx/xx-xx	S302-F3/06/xx-2xx/xx-xx	300	185	170	7
S302-04/10/xx-2xx/xx-xx	S302-F3/10/xx-2xx/xx-xx	480	245	170	12
S302-04/16/xx-2xx/xx-xx	S302-F3/16/xx-2xx/xx-xx	670	300	170	17
S302-04/25/xx-2xx/xx-xx	S302-F3/25/xx-2xx/xx-xx	1030	400	170	27
5 digits	4 digits + dimension				
S302-05/06/xx-2xx/xx-xx	S302-F4/06/xx-2xx/xx-xx	400	185	170	8
S302-05/10/xx-2xx/xx-xx	S302-F4/10/xx-2xx/xx-xx	680	245	170	15
S302-05/16/xx-2xx/xx-xx	S302-F4/16/xx-2xx/xx-xx	960	300	170	21
S302-05/25/xx-2xx/xx-xx	S302-F4/25/xx-2xx/xx-xx	1500	400	170	36
6 digits	5 digits + dimension				
S302-06/06/xx-2xx/xx-xx	S302-F5/06/xx-2xx/xx-xx	400	185	170	8
S302-06/10/xx-2xx/xx-xx	S302-F5/10/xx-2xx/xx-xx	680	245	170	15
S302-06/16/xx-2xx/xx-xx	S302-F5/16/xx-2xx/xx-xx	960	300	170	21
S302-06/25/xx-2xx/xx-xx	S302-F5/25/xx-2xx/xx-xx	1500	400	170	36
7 digits	6 digits + dimension				
-	S302-F6/03/xx-2xx/xx-xx	300	185	170	7
S302-07/06/xx-2xx/xx-xx	S302-F6/06/xx-2xx/xx-xx	510	185	170	9
S302-07/10/xx-2xx/xx-xx	S302-F6/10/xx-2xx/xx-xx	870	245	170	18
S302-07/16/xx-2xx/xx-xx	S302-F6/16/xx-2xx/xx-xx	1100	300	170	24
S302-07/25/xx-2xx/xx-xx	S302-F6/25/xx-2xx/xx-xx	1730	400	170	42
8 digits	7 digits + dimension				
S302-08/06/xx-2xx/xx-xx	S302-F7/06/xx-2xx/xx-xx	510	185	170	9
S302-08/10/xx-2xx/xx-xx	S302-F7/10/xx-2xx/xx-xx	870	245	170	18

¹⁾ The figures shown are approximate values.